



Feature :

- Thru-hole terminal
- SPST, SPDT
- Momentary function

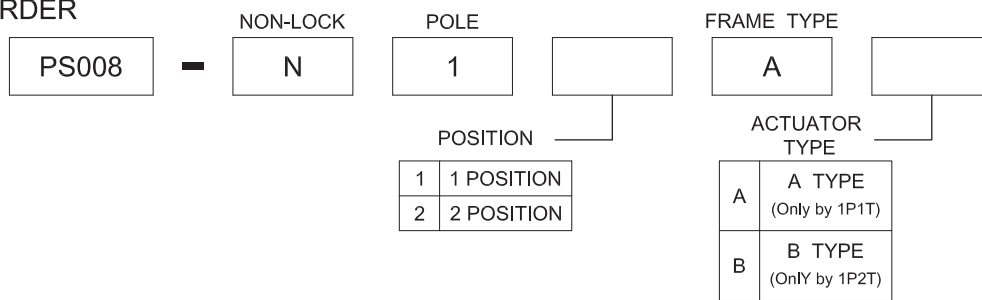
Application :

- Instrumentation
- Telecommunications
- Computer and peripherals Networking equipments
- Office appliances
- Home electrical appliances



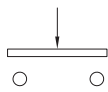
SWITCH SPECIFICATIONS	
POLE - POSITION	Momentary action , 1P1T or 1P2T
CONTACT RATING	1Amp with resistive load @ 125VAC or 28VDC
CONTACT RESISTANCE	20 mΩ MAX. 1.5 V DC ; 100 mA , by Method of Voltage DROP
INSULATION RESISTANCE	1000 MΩ MIN. 500 V DC
DIELECTRIC STRENGTH	Breakdown is not Allowable ; 1500 V AC for 1 Minute
OPERATING FORCE	250 ± 100 gf
OPERATING LIFE	30,000 cycles
OPERATING TEMPERATURE RANGE	-40°C ~ 85°C
TOTAL TRAVEL	SPST : 1.5 ± 0.3 mm , SPDT : 1.2 ± 0.3mm

▶ HOW TO ORDER

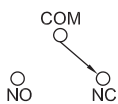


▶ CIRCUIT

1P1T :

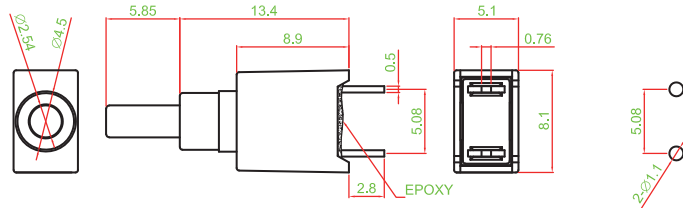


1P2T :

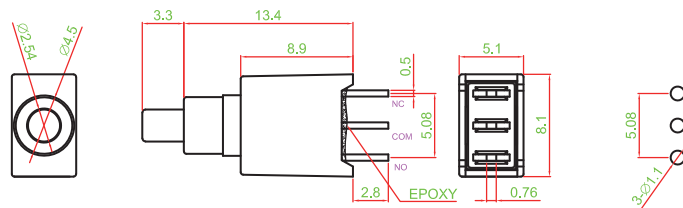


▶ DIMENSION

PS008-N11AA



PS008-N12AB



- TACT SWITCH
- PUSH BUTTON SWITCH
- LED TOUCH SENSOR SWITCH
- 5 DIRECTION NAVIGATION SWITCH WITH LED
- MEMBRANE SWITCH
- LED LIGHT BAR
- SLIDE SWITCH
- ROTARY SWITCH
- ROCKER SWITCH
- DETECT SWITCH
- ENCODER
- INTERRUPTER
- MINIATURE MICRO SWITCH
- TELEPHONE HOOK SWITCH
- DOOR SWITCH
- MINI SIZE SOCKET
- KNOB
- CAP SYMBOL